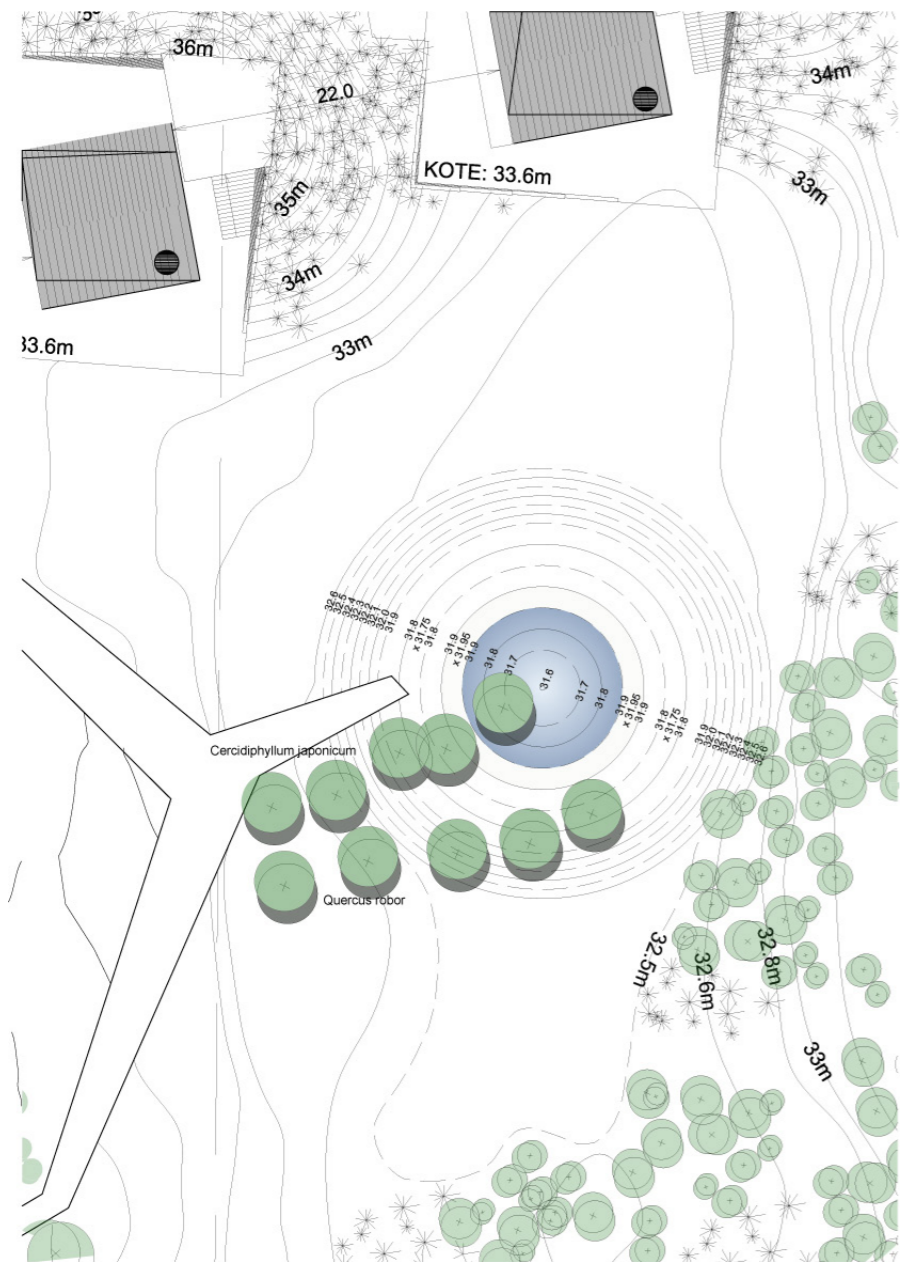
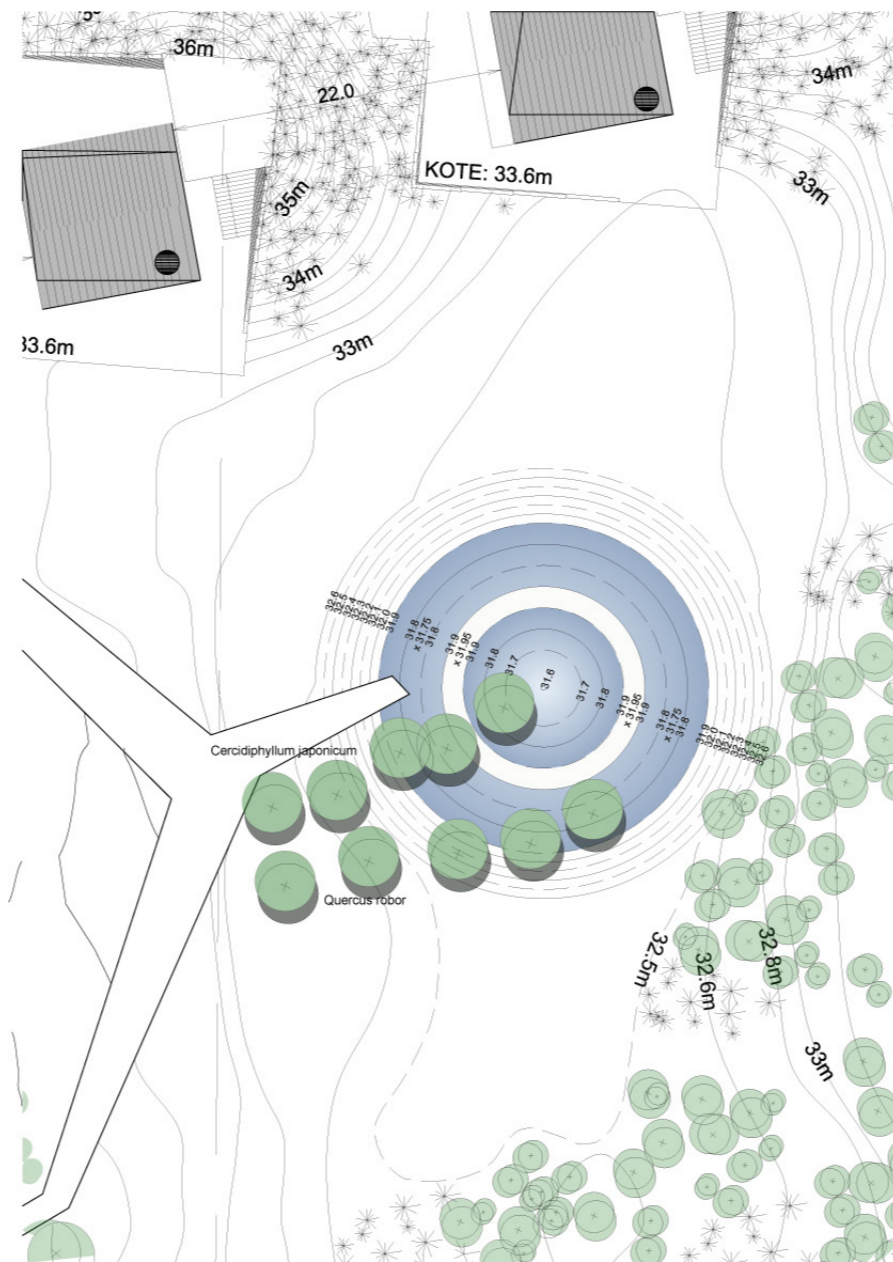


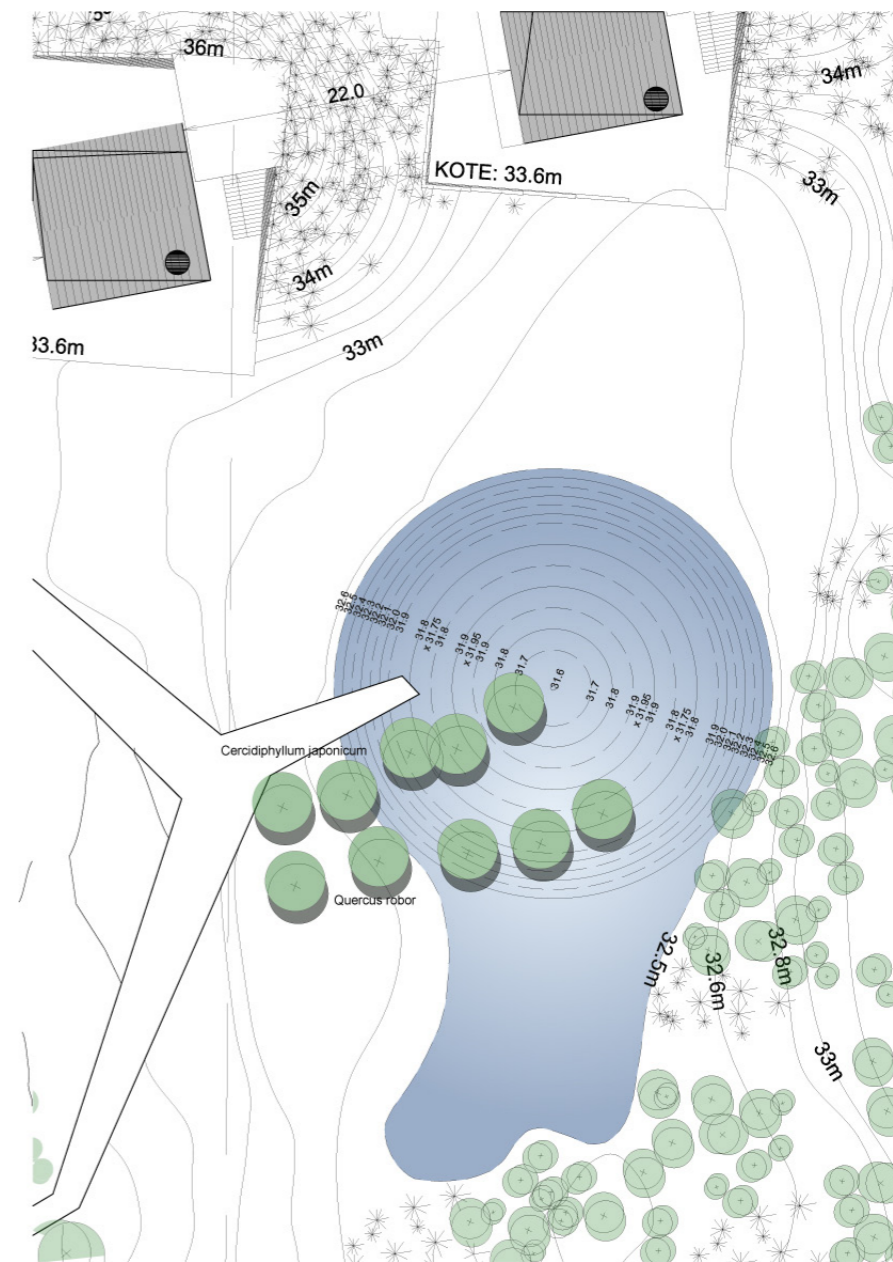
Regnbedets 3 scenarier
1:500



Scenarie 1: Ofte forekommende vandstand.
Overløb fra faskine til kote 31.90.



Scenarie 2: Sjælden forekommende vandstand.
Overløb fra faskine til kote 32.00, sunket til kote 31.90.



Scenarie 1: Ekstrem vandstand.
Overløb fra faskine til kote 32.50.